



MAKING CONCRETE PERFORMANCE READY

HIGH-PERFORMANCE CONCRETE, GREENICE CURE

PROMOTING BEST CONCRETE PRACTICE

CURE AND DENSIFICATION BENEFITS *@Day of Placement™*

CONSTRUCTION STAGING *@EarlyAge™*

PLACEMENT IMPERFECTIONS REMOVED

OPTIONAL CLASS OF MECHANICAL PROFILE

OPTIONAL UNCONVENTIONAL POLISHED GLASS APPEARANCE

GREENUMBRELLA®

Greenice

CURE & PROFILE SYSTEM

SYSTEM
SPECIFICATION



GREENUMBRELLA®
FULLSPEC

GREEN UMBRELLA®

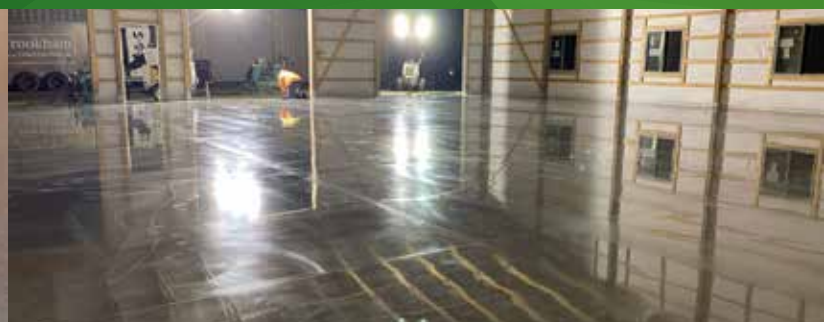
GreenIce

CURE & PROFILE SYSTEM

Green Umbrella GreenIce Cure & Profile™ System is an interior @EarlyAge™ integral concrete cure with a reduced amount of conventional abrasive cuts. Introducing a cure IceStart™, during finishing, followed by a fixative, IceStop™ the GreenIce Cure & Profile™ System creates a highly consolidated and refined surface that is the basis for the highest performance floor. Uniquely promoting best concrete practice, improving edges and ff/fl numbers. With a unique liquid abrasive cutting agent, GreenCut™ and various GC abrasives line up of BigStock™, GC-X™, GC-Fusion™, GC Eraser™, and GCPolishPlus™ cover any class of profile, including

the option of an unconventional highly reflective glass like polish.

Advancing construction staging allows mechanical profile to be performed days after placement, not months like is the standard— with the use of a conventional grinder or a fitted finishing trowel. The finished treatments, at reduced application rates: Shield & Enhance, salt protection. Interior Microfilm™ is a repairable wear-guard that brings industry-leading hardness, density, abrasion resistance, and ultimate stain resistance. All while retaining the maximum moisture within the concrete during curing for an unconventional architectural concrete floor is truly performance-ready.



IceStart™ is a *Surface Applied SCM (Supplementary Cementitious Material) Admixture* that is the first treatment of a *Two-part Surface Applied Admixture Cure and Densification System*, called *GreenIce Cure System™* with *GUnanolInside* technology— that is designed for Interior or Exterior concrete. Used only @EarlyAge concrete staging, it is a chemical and mechanical process applied at time of concrete placement and power troweling.

IceStop™ is a *Hydrophobic Fixative for Surface Applied Admixture Cure* that is the second treatment of a *Two-part Surface Applied Admixture Cure and densification System*, *GreenIce Cure™*, with *GUnanolInside* technology— that is designed for Interior, or Exterior concrete—applied after the power trowel concrete finishing is complete. IceStop crosslinks to IceStart cure to form benefits conventionally seen only in high-performance polished concrete floors.

GreenCut™ is a *Neutral Nano Surface Profile Agent*. Used in applications where conventional laborious processing was specified but where a more refined surface and reduction in product treatment is desired.

Shield & Enhance™ basic use is a *Penetrating Completely Reactive Silane Modified Densifier* for interior or exterior. Used in applications where basic hardeners are specified but where a color guard that will prevent oxidization, not simply a color inhibitor— with the highest stain chloride intrusion, stain and salt protection, and high-performance concrete hardener is desired.

Interior Microfilm™ is a *Penetrating Reactive Interior Microfinish for Profiled Surfaces* for interior surfaces only. Used in applications where basic stain guards are specified but where a more permeant, reactive, and high-performance treatment is desired.

CURE

PROFILE

TREATMENTS

ICESTART

ICESTOP

GREENCUT

GC ABRASIVES

SHIELD&ENHANCE

INTERIOR MICROFILM