



SAFETY DATA SHEET

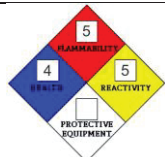
PART 1

1. PRODUCT AND COMPANY IDENTIFICATION

PRODUCT NAME	PCR Permanent Concrete Repair: Part 1
PRODUCT USE	Repair of Damaged Concrete - Dry Mix
MANUFACTURE'S NAME	Green Umbrella Architectural Concrete Systems 20 Jetview Drive Rochester, NY 14624 (844) 200-7336
SUPPLIER'S NAME	SEE MANUFACTURER
EMERGENCY NUMBER	CHEMTREC (24/7): 1-800-424-9300

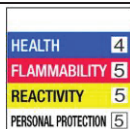
2. HAZARDS IDENTIFICATION

ROUTE OF ENTRY	Inhalation, Skin contact.
CARCINOGENIC STATUS	Respirable crystalline quartz is a suspected human carcinogen, ACGIH Group A2
TARGET ORGANS	Lungs, skin
HEALTH EFFECTS – EYE	Dust may cause irritation and possibly corneal damage.
HEALTH EFFECTS – SKIN	May dehydrate skin.
HEALTH EFFECTS – INGESTION	Irritation of mouth, throat and digestive tract.
HEALTH EFFECTS – INHALATION	Prolonged or repeated very close exposure to fine crystalline silica dust may cause scarring of the lungs.



NFPA

5-MINIMAL; 4-SLIGHT; 3-MODERATE; 2-HIGH; 1-EXTREME



HMIS

**For Hazardous Materials [or Dangerous Goods] Incident
Spill, Leak, Fire, Exposure, or Accident
Call CHEMTREC 24 Hours**

1-800-424-9300 / +1 703-527-3887 CCN: 871558

3. COMPOSITION / INFORMATION ON INGREDIENTS

HAZARDOUS INGREDIENTS	CAS NUMBER	WEIGHT %	TLV Mg/m3	LD50 ORAL RAT Mg/kg	LC50 INHAL RAT ppm
SILICA, CRYSTALLINE QUARTZ	14808-60-7	60 - 100	0.05*	NA	NA
MAGNESIUM OXIDE	1309-48-4	10 - 30	3.0*	NA	NA
(Respirable Fraction)		(0.67%)	*		

4. FIRST AID MEASURES

FIRST AID – INHALATION	Remove from exposure. If there is difficulty in breathing, give oxygen. Obtain medical attention immediately.
FIRST AID – SKIN	Immediately flood the skin with large quantities of water, preferably under a shower. Obtain medical attention if blistering occurs or redness persists.
FIRST AID – EYE	Immediately flood the eye with plenty of water for at least 15 minutes, holding the eye open. Obtain medical attention if soreness or redness persists.
FIRST AID – INGESTION	Rinse mouth out with water.

INFORMATION FOR DOCTOR

Most important symptoms and effects, both acute and delayed

No further relevant information available

Indications of any immediate medical attention and special treatment needed

No further information available

5. FIRE FIGHTING MEASURES

CONDITIONS OF FLAMMABILITY	Non-flammable. Will not support combustion.
EXTINGUISHING MEDIA	NA
SPECIAL HAZARDS OF PRODUCT	NA
PROTECTIVE EQUIPMENT FOR FIRE FIGHTING	NA
EXPLOSION DATA – SENSITIVITY TO IMPACT	No
EXPLOSION DATA – SENSITIVITY TO STATIC DISCHARGE	Yes

6. ACCIDENTAL RELEASE MEASURES

SPILL PROCEDURES	Non-reactive. Transfer into non-dusting sealed containers for recovery or disposal.
PERSONAL PRECAUTIONS	Avoid creation of dust. Wear NIOSH approved particle mask, gloves, and eye protection.
ENVIRONMENTAL PRECAUTIONS	Stable in environment. Not toxic to wild life.

REFERENCE TO OTHER SECTIONS

See Section 7 for information on safe handling
 See Section 8 for information on personal protection equipment
 See Section 13 for disposal information

7. HANDLING AND STORAGE

HANDLING	Use in well-ventilated area. Use local exhaust ventilation. Avoid inhaling dust. Avoid contact with eyes, skin and clothing. Handle carefully to avoid creating dust.
STORAGE	Store in a dry area.

INFORMATION ABOUT PROTECTION AGAINST EXPLOSIONS AND FIRE

Keep Ignition sources away – Do Not Smoke
 Protect against electrostatic changes

SPECIFIC END USE (S)

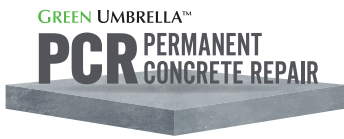
No further relevant information available

8. EXPOSURE CONTROLS/ PERSONAL PROTECTION

ENGINEERING CONTROL MEASURES	Use in well-ventilated area. Avoid creation of dust. Up to 0.5 mg/m3 use air purifying respirator with high efficiency particulate filter. Up to 1.25 mg/m3 use powered air purifying respirator with high efficiency filter. Up to 2.5 mg/m3 use full-faced piece air purifying respirator with high efficiency particulate filter.
RESPIRATORY PROTECTION	Wear NIOSH approved particle respirator.
HAND PROTECTION	Gloves should be worn during all handling operations.
EYE PROTECTION	Protect eyes from dust.
BODY PROTECTION	Clothing should cover body adequately to prevent exposure.
PROTECTION DURING APPLICATION	Will release ammonia gas when mixed with 1260 Part B. Venting or respiration equipment may be required when working in confined spaces. After installation and drying, activities such as grinding, sawing or tear-out of material may cause dust concentration to be above the TLV limit for crystalline quartz.

9. PHYSICAL AND CHEMICAL PROPERTIES

PHYSICAL STATE	Solid
ODOUR & APPEARANCE	None, Grey-buff
ODOR THRESHOLD (ppm)	NA
SPECIFIC GRAVITY	2.65
VAPOR DENSITY (AIR = 1)	NA
VAPOR PRESSURE 20 C	10 mm @ 1730 C
EVAPORATION RATE	None
BOILING POINT (° C)	2230
FREEZING POINT (° C)	NA



pH	NA
COEFFICIENT OF WATER/OIL DISTRIBUTION	NA
SOLUBILITY IN WATER	Insoluble
VOC (g/l)	0
FLASH POINT (PMCC) (°C/F)	NA
UPPER FLAMMABLE LIMIT %VOL	NA
LOWER FLAMMABLE LIMIT %VOL	NA
AUTOIGNITION TEMP (°C/F)	NA

10. STABILITY AND REACTIVITY

STABILITY	Contact with strong oxidizing agents.
CONDITIONS TO AVOID	Oxidizing agents: fluorine, chlorine trifluoride, manganese trioxide, oxygen difluoride
MATERIALS TO AVOID	Strong oxidizing agents.
HAZARDOUS POLYMERIZATION	Will not occur.
HAZARDOUS DECOMPOSITION PRODUCTS	Silica will dissolve in hydrofluoric acid and produce a corrosive gas (silicon tetra fluoride)

11. TOXICOLOGICAL INFORMATION

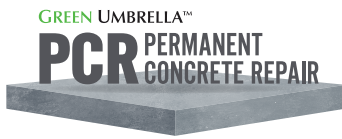
EFFECTS OF ACUTE EXPOSURE	NA - No known acute toxicity.
EFFECTS OF CHRONIC EXPOSURE	Repeated inhalation of concentrated free silica dust may cause delayed lung injury (silicosis).
EXPOSURE LIMITS	0.05 mg/m3 Respirable quartz dust.
IRRITANCY	Mild irritation expected
SENSITIZATION	Unlikely.
CARCINOGENICITY	The International Agency for Research on Cancer has concluded that crystalline silica in the form of quartz from occupational exposures should be classified as carcinogenic to humans (Group 1) The American Conference of Government Industrial Hygienists has given crystalline silica, quartz an A2 classification, suspected human carcinogen. Simultaneous exposure to known carcinogens can increase carcinogenicity of crystalline silica.
REPRODUCTIVE TOXICITY	NA
TERATOGENICITY	NA
MUTAGENICITY	NA
TOXICOLOGICALLY SYNERGISTIC PRODUCTS	Synergistic effect between smoking and crystalline silica is likely.

12. ECOLOGICAL INFORMATION

MOBILITY	Stable in environment.
PERSISTENCE/DEGRADABILITY	Non-biodegradable, generally non-toxic.
BIO-ACCUMULATION	Product does not bioaccumulate.
ECOTOXICITY	Not toxic to wild life.
RESULTS of PBT and vPvB Assessment PBT: N/A vPvB: N/A	

13. DISPOSAL CONSIDERATIONS

PRODUCT DISPOSAL	Non-reactive. Transfer into non-dusting, sealed containers for recovery or disposal. Dispose of in an approved landfill site. Contact local authorities for disposal approval.
CONTAINER DISPOSAL	Empty bags may contain hazardous residues. Dispose of bags with care.



14. TRANSPORTATION INFORMATION

UNITED STATES	TDG CLASSIFICATION
HAZARD LABEL NOT REQUIRED	NOT REGULATED
EXPORT	
DOT CFR 172.101 DATA	NOT REGULATED
UN PROPER SHIPPING NAME	NA
UN CLASS	NA
UN NUMBER	NA
UN PACKAGING GROUP	NA
FLASH POINT	NA
HAZARDOUS MATERIAL	NA
HAZARD LABEL	NA

Not regulated by CANADA as a hazardous material in any package size.

**For Hazardous Materials [or Dangerous Goods] Incident
Spill, Leak, Fire, Exposure, or Accident
Call CHEMTREC 24 Hours
1-800-424-9300 / +1 703-527-3887 CCN: 871558**

15. REGULATORY INFORMATION

WHMIS CLASSIFICATION: CLASS D, DIV.2, SUBDIVISION A-Very Toxic Material
CEPA STATUS (DSL): All of the ingredients of this product are listed on the Domestic Substances List.
This product has been classified in accordance with the hazard criteria of the Controlled Products Regulations (CPR) and the MSDS contains all the information required by CPR.

16. OTHER INFORMATION

HAZARD RATING (HMIS)	HEALTH: 4 FLAMMABILITY: 5 REACTIVITY: 5 5-MINIMAL; 4-SLIGHT; 3-MODERATE; 2-HIGH; 1-EXTREME
KEY	NA: No applicable information found or available CAS#: Chemical Abstracts Service Number ACGIH: American Conference of Governmental Industrial Hygienists OSHA: Occupational Safety and Health Administration TLV: Threshold Limit Value PEL: Permissible Exposure Limit STEL: Short Term Exposure Limit NTP: National Toxicology Program IARC: International Agency for Research on Cancer R: Risk S: Safety LD50: Lethal Dose 50% LC50: Lethal Concentration 50%
PREPARED BY:	GREEN UMBRELLA

REVISION DATE	SEPTEMBER 8, 2020
---------------	-------------------

Provided data is offered in good faith as typical values and not as a product specification. No warranty, either express or implied, is hereby made. The recommended industrial hygiene and safe handling procedures are believed to be generally applicable, however, each user should review these recommendations.